

tivoli



LITESPHERE
ADAPT DROP

ADAPT Drop String Light- How it works

A simple 3 step order process for cord spacing, drop length with light engine and globe choice for endless design combinations to create a unique experience for personal or public space.

● CONNECTION

IP65 Outdoor 2 pin twist connector for solid, reliable performance.

● SHADE ADAPTER - optional

Tivoli's Patent Pending universal shade adapter allows you to mix and match any shade with our line of String Light.

● LIGHT SHADE - optional

Multiple light shades to choose from to add form and function to your design.

● DROP

Tivoli's New DROP system gives you standard 3 length options and a custom offering for additional lengths.

● VHO LED

With 90 lumens each, Tivoli's VHO wedge based LED is 23 times brighter than our standard output offering. Built with Nichia SMD LEDs and a thermal plastic base for optimal heat dissipation.

● ADAPT GLOBES & ADAPTER

11 globe options to finish your design and achieve a personal look.



1 Choose Your Cord

*Max run lengths based on Tivolis recommended lumen drop.
 **Weights are based on (1) 50' single run ONLY - no globe or drop attached.

Order Information

LSD-STRND-24
 BLACK, 24" OC, strand only (no DROP)
 includes push PVC end cap for field cutting.



NOTE: (1) **LSD-LEAD-10** must be ordered with each, complete electrical maximum run.

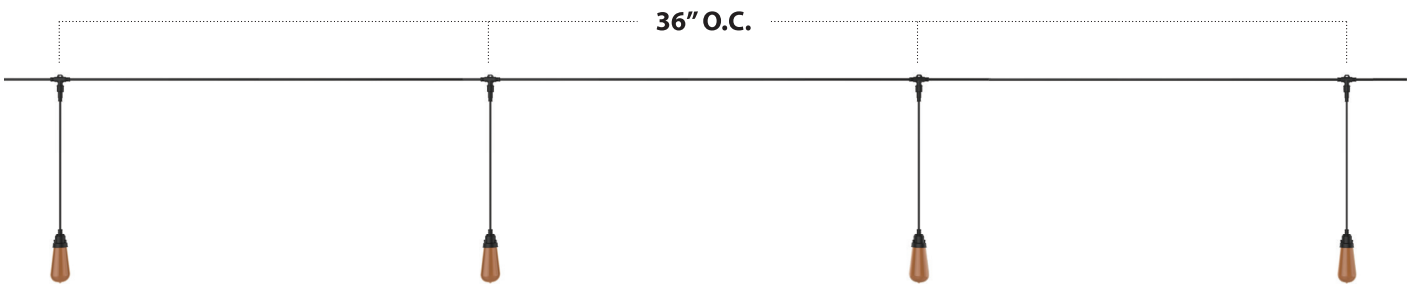
ON CENTER SPACING	*MAX ELECTRICAL RUN	WATT PER FOOT	**WEIGHT (50' STRAND ONLY)
24"	50'	0.48	3.56 lbs.



Order Information

LSD-STRND-36
 BLACK, 36" OC, strand only (no DROP)
 includes push PVC end cap for field cutting.

ON CENTER SPACING	*MAX ELECTRICAL RUN	WATT PER FOOT	**WEIGHT (50' STRAND ONLY)
36"	100'	0.32	3.89 lbs.



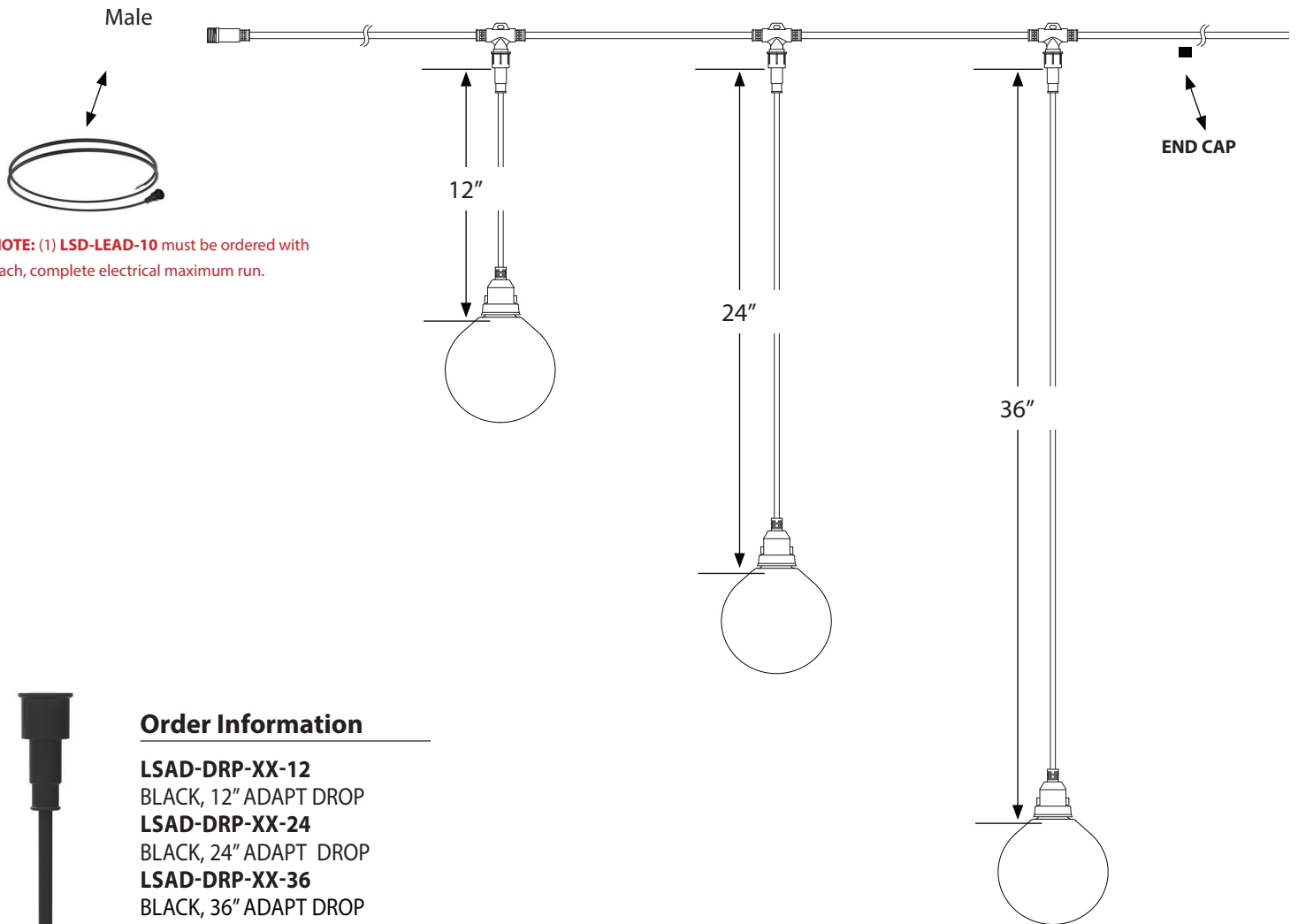
Order Information

LSD-STRND-48
 BLACK, 24" OC strand - Staggered socket capped spacing to 48" OC, strand only (no DROP)
 includes push PVC end cap for field cutting.

ON CENTER SPACING	*MAX ELECTRICAL RUN	WATT PER FOOT	**WEIGHT (50' STRAND ONLY)
48"	120'	0.24	3.56 lbs.



2 Choose Your DROP Option & LED Color



NOTE: (1) **LSD-LEAD-10** must be ordered with each, complete electrical maximum run.



Order Information

- LSAD-DRP-XX-12**
BLACK, 12" ADAPT DROP
- LSAD-DRP-XX-24**
BLACK, 24" ADAPT DROP
- LSAD-DRP-XX-36**
BLACK, 36" ADAPT DROP

XX = Kelvin Temperature Option: 19, 27, 30, 35, 40, 50, AM, RD, GN, YL, RB

TOTAL WEIGHT

- 12": 0.15 lbs.
- 24": 0.19 lbs.
- 36": 0.22 lbs.

All DROPS are pre-built with Adapter and VHO LED chip and ready to install in field.
* Consult factory for lead time and MOQ

3 Choose Your Globe

LSA Globes: All ADAPT globes come with (1) foam washer each.



Shatter Resistant Silicone Coating
(Shatter resistance assist with silicone coating - Glass may still break under certain conditions)

G125 Globe (Weight: 4 oz./ea.)



Ana
LSA-ANA



Angela
LSA-ANG



Gina
LSA-GIN



Gaby
LSA-GAB



Katie
LSA-KAT



Susan*
LSA-SUS



Toni*
LSA-TON



Lucia*
LSA-LUC



Victoria*
LSA-VIC

*Consult Factory for MOQ and Lead Time.

ST19 Globe (Weight: 1.6 oz./ea.)



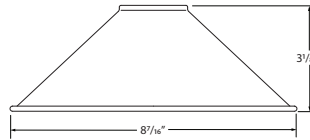
Laura*
LSA-LAU



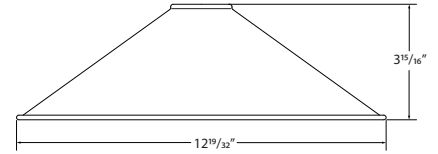
Shatter Resistant
Silicone Coating



Brenda
LSA-BRE

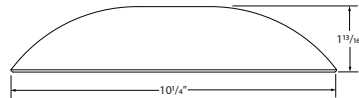
Light Shades
HAT


SHADE-HT-BK-BK-8
Light Shade - HAT
8.3" Black Top, Black Bottom

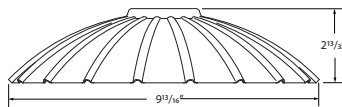
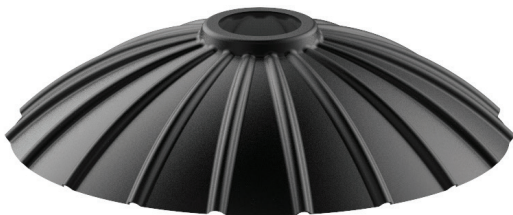


SHADE-HT-BK-BK-13
Light Shade - HAT
12.6" Black Top, Black Bottom
***SHADE-HT-BK-CO-13**
Light Shade - HAT
12.6" Black Top, Copper Bottom

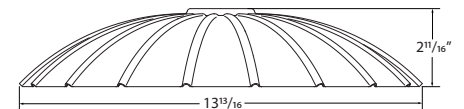
*Consult factory for lead time and MOQ

DISH


SHADE-DS-BK-BK-10
Light Shade - DISH
8.0" Black Top, Black Bottom

FLOWER


SHADE-FL-BK-BK-10
Light Shade - FLOWER
9.8" Light Shade, Black Top, Black Bottom



SHADE-FL-BK-BK-13
Light Shade - FLOWER
13.8" Light Shade, Black Top, Black Bottom

Accessories


Shade Adapter Assembly Example

SHADE-ADP-BK-01 Light Shade Adapter - Single

PVC Black Adapter - Sold individually. Includes (1) Adapter, (1) Adapter plates, (2) set screws and (1) Allen Key

SHADE-ADP-BK-26 Light Shade Adapter - 24" OC

PVC Black Adapter Kit - Sold in packs of 26. Includes (26) Adapters, (26) Adapter plates, (52) set screws and (1) Allen Key

SHADE-ADP-BK-17 Light Shade Adapter - 36" OC

PVC Black Adapter Kit - Sold in packs of 17. Includes (17) Adapters, (17) Adapter plates, (34) set screws and (1) Allen Key

SHADE-ADP-BK-13 Light Shade Adapter - 48" OC

PVC Black Adapter Kit - Sold in packs of 13. Includes (13) Adapters, (13) Adapter plates, (26) set screws and (1) Allen Key

Mounting

Multi-purpose cable with cable locks for quick, reliable support up to 330 pounds of load and spans from 60 - 500 feet.

WARNING: For suspension application, catenary cable is required to support the product, otherwise the warranty will be void.



LS-CABLE-60 Catenary Cable Kit - 60'
(1/8" galvanized aircraft cable includes 2 cables locks for use with loads up to 200lbs)

LS-CABLE-110 Catenary Cable Kit - 110'
(1/8" galvanized aircraft cable includes 2 cables locks for use with loads up to 200lbs)

LS-CABLE-500 Catenary Cable Kit - 500'
(1/8th" galvanized aircraft cable for use with loads up to 200lbs)



LS-LOCK-X Cable Lock
X = 2 (2 Locks), 4 (4 locks) Includes (1) cable release key.
Cable Lock for 1/8th inch cable, Heavy-duty lockable fasteners support loads up to 200 lbs. Can be easily adjusted without the use of tools.



LS-TT Catenary Tensioning Tool
Catenary Cable Tensioning Tool up to 880lbs with minimal effort due to the 6:1 gear drive mechanism. Integral torque gauge controls the load applied to the wire, giving consistent tension every time and optimizing the life of the wire.

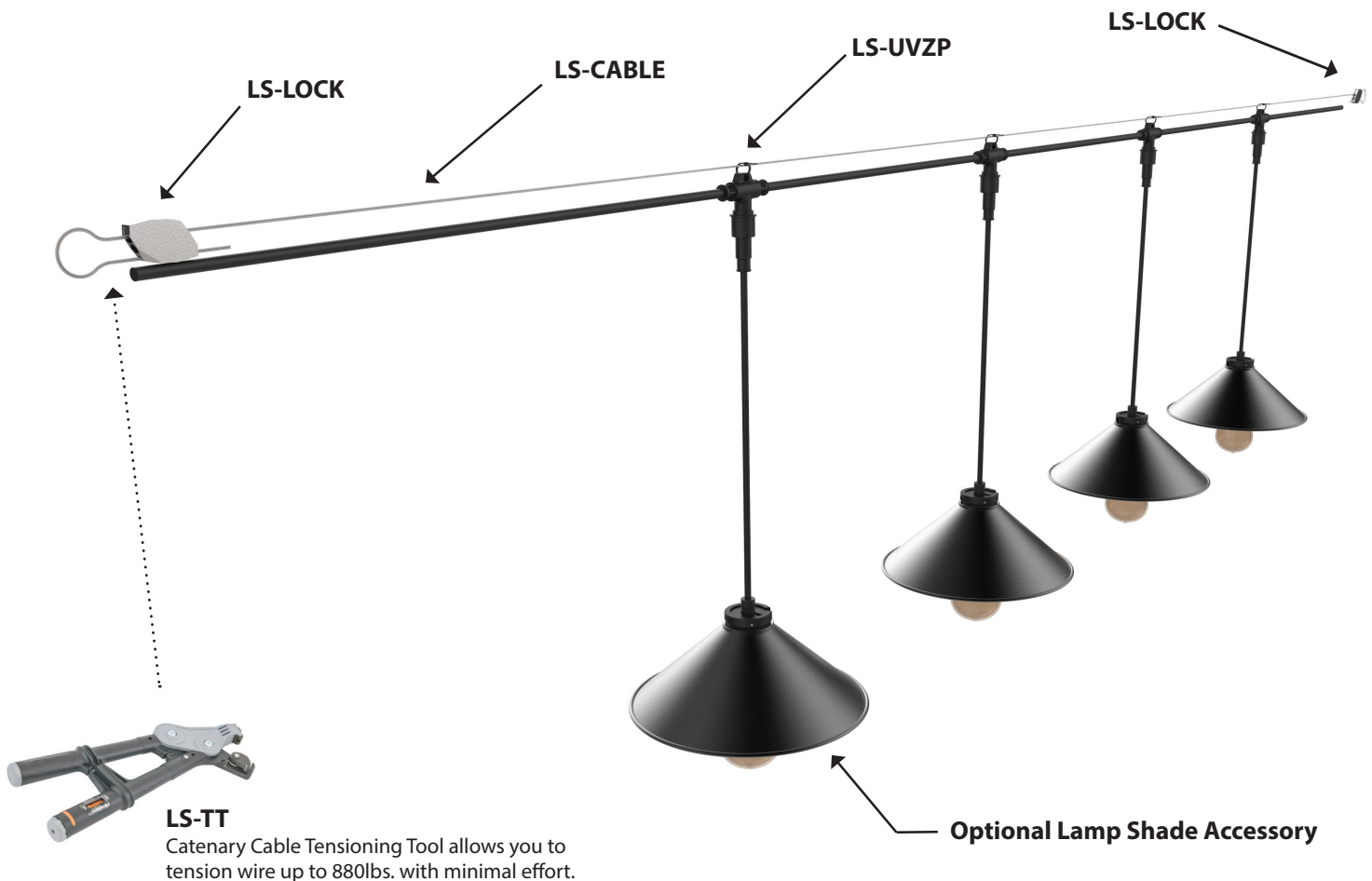


LS-UVZP-BK-50 UV Zip Ties
50 pc Bag set. UV resistant, heavy duty ties. Maximum weight up to 100 lbs./per tie.



LS-UVZP-BK-30 UV Zip Ties
30 pc Bag set. UV resistant, heavy duty ties. Maximum weight up to 100 lbs./per tie.

Installation with Suspension Cable



Replacement Parts

Light Engine



- | | |
|--|---|
| <p>LSL-19-V-12
12V Wedge base
1900K</p> <p>LSL-27-V-12
12V Wedge base
2700K</p> <p>LSL-30-V-12
12V Wedge base
3000K</p> <p>LSL-35-V-12
12V Wedge base
3500K</p> <p>LSL-40-V-12
12V Wedge base
4000K</p> <p>LSL-50-V-12
12V Wedge base
5000K</p> <p>LSL-AM-V-12
12V Wedge base
Amber</p> | <p>LSL-RD-V-12
12V Wedge base
Red</p> <p>LSL-RB-V-12
12V Wedge base
Royal Blue</p> <p>LSL-GN-V-12
12V Wedge base
Green</p> <p>LSL-YL-V-12
12V Wedge base
Yellow</p> |
|--|---|

Lead Wire



- LSD-LEAD-10**
10' Lead Wire
IP67 Female Twist Connection
to SJTW 16AWG/2C bare wire.

End Cap



- LSD-EC-PK20**
BLACK, T-Socket End Cap, PVC
- sold in packs of 20

Recommended Power Supplies

ADNM - NON DIMMING

DESCRIPTION	CAT NO	APPLICATION	PRIMARY VOLTAGE	SECONDARY VOLTAGE	CIRCUIT BREAKERS	MAX LOAD	CIRCUIT CAPACITY
ADNM Series Class 2 Transformer	ADNM-60-1-5-12-D	Indoor / Outdoor	100-277V AC 50/60 HZ	12V DC	1	60W	5A
	ADNM-80-1-5-12-D				1	60W	5A
	ADNM-150-2-5-12-D				2	2x60W	2x5A
	ADNM-240-3-5-12-D				3	3x60W	3x5A
	ADNM-320-4-5-12-D				4	4x60W	4x5A

ADNM - 0-10V DIMMING

DESCRIPTION	CAT NO	APPLICATION	PRIMARY VOLTAGE	SECONDARY VOLTAGE	CIRCUIT BREAKERS	MAX LOAD	CIRCUIT CAPACITY
ADNM Series Class 2 Transformer	ADNM-60-1-5-12-DOT	Indoor / Outdoor	100-277V AC 50/60 HZ	12V DC	1	60W	5A
	ADNM-80-1-5-12-DOT				1	60W	5A
	ADNM-150-2-5-12-DOT				2	2x60W	2x5A
	ADNM-240-3-5-12-DOT				3	3x60W	3x5A
	ADNM-320-4-5-12-DOT				4	4x60W	4x5A

ADNM - DMX SINGLE ADDRESS

DESCRIPTION	CAT NO	APPLICATION	PRIMARY VOLTAGE	SECONDARY VOLTAGE	CIRCUIT BREAKERS	MAX LOAD	CIRCUIT CAPACITY
ADNM Series Class 2 Transformer	ADNM-60-1-5-12-DIN	Indoor / Outdoor	100-277V AC 50/60 HZ	12V DC	1	60W	5A
	ADNM-80-1-5-12-DIN				1	60W	5A
	ADNM-150-2-5-12-DIN				2	2x60W	2x5A
	ADNM-240-3-5-12-DIN				3	3x60W	3x5A
	ADNM-320-4-5-12-DIN				4	4x60W	4x5A

ADNM - DMX MULTI ADDRESS

DESCRIPTION	CAT NO	APPLICATION	PRIMARY VOLTAGE	SECONDARY VOLTAGE	CIRCUIT BREAKERS	MAX LOAD	CIRCUIT CAPACITY
ADNM Series Class 2 Transformer	ADNM-150-2-5-12-DIN-2	Indoor / Damp	100-277V AC 50/60 Hz	12V DC	2	2x60W	5A
	ADNM-240-3-5-12-din-3				3	3x60W	3x5A

INFINITY - MLV / ELV / 0-10V / PWM / TRIAC

DESCRIPTION	CAT NO	APPLICATION	PRIMARY VOLTAGE	SECONDARY VOLTAGE	CIRCUIT BREAKERS	MAX LOAD	MIN LOAD	CIRCUIT CAPACITY
Infinity Series Class 2 Transformer	INF-J-30-1-2.5-12	Indoor / Outdoor	100 - 277V AC	12V DC	1	30W	3W	2.5A
	INF-J-60-1-5-12				1	60W	6W	5A
	INF-J-180-3-5-12				3	3x60W	3x6W	3x5A
	INF-J-300-5-5-12				5	5x60W	5x6W	5x5A

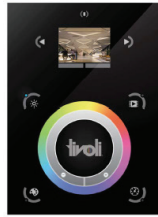
Controls



Touchscreen

TVOQ-1-WH

WH (White only)
512 DMX channel, 16 scene,
4 zone, glass touch screen



Touchscreen

TVOQ-10-XX-7

XX = BK (Black), WH (White)
1024 DMX channel, 500 scene,
10 zone, glass touch screen



Touchscreen

TVOQ-2-XX

XX = BK (Black), WH (White)
512 DMX channel, 99 scene,
1 zone, glass touch screen